



KERALAM MUSEUM OF HISTORY & HERITAGE (IMCK)

Park View, Thiruvananthapuram-33

(Nodal agency of museums under all the Departments and
institutes functioning under the control of Govt. of Kerala)

Website: www.museumkeralam.org, Email: info@museumkeralam.org

Phone: 0471-2320231, +91-9188847937

No.KIM/776/2023

Date:27.04.2024

REQUEST FOR PROPOSAL

Selection of Museum Consultancy Firm for “Setting up of A. Ramachandran Art Gallery at Sree Narayana Guru Cultural Centre, Kollam.

Request For Proposal is invited by Interactive Museum of Cultural History of Kerala (Keralam Museum of History and Heritage) from the Empanelled/Non Empanelled, reputed, experienced, and competent Consultancy Firms for Setting up of a Museum of A. Ramachandran Art Gallery at Sree Narayana Guru Cultural Centre, Kollam. The Non- Empanelled and empanelled firms should furnish company details and other required data within the prescribed format and should get pre-qualification before fixing the bid. The details relating to the nature and scope of the project, eligibility criteria, terms and conditions and other information relating to the Request For Proposal are as detailed below.

Sd/-

Executive Director

Interactive Museum of Cultural History of Kerala
(Keralam Museum of History and Heritage)

Setting up of a A .Ramachandran Art Gallery at Sree Narayana Guru Cultural Centre, Kollam.

Introduction

Born in Kerala A. Ramachandran is one of India's most distinguished and prolific artists who has ceaselessly experimented with visual language for more than five decades. Painter, Sculptor, Graphic Artist, Designer and art educationist Ramachandran has explored diverse mediums and scales with a dynamic personal vision and distinctive artistic style. Deeply influenced by Indian Classical Art and Nandalal Bose in Particular, Ramachandran was a master of Indian aesthetics by painting archetypal Indian imagery and Socio- political symbols in a modernist vein.

Vision:

As an esteem towards the great artist A. Ramachandran from his home land the Govt. of Kerala had decided to establish an Art Gallery which displays the valuable contributing of the veteran Artistry exploring the intricate interplay of light and shadow, color and texture to reveal the extraordinary within the ordinary of his contributions. The gallery is planning to arrange in the Sree Narayana Cultural Centre, Kollam one of the ancient Port Town in Kerala. This gallery in the Name of A. Ramachandran will definitely be an art space catering to the taste of all art enthusiasts from far and wide.

Eligibility Criteria For Application

Those who are including Empanelled/Non Empanelled firms should attend the **Pre-bid meeting**.

Pre-bid meeting date 03.05.2024 Time –11 AM Medium of meeting –

Offline/Online (Zoom/Google meet)

Non Empanelled/Empanelled firms who are willing to participate in the Request Of Proposal shall submit their Firm details (General qualification)as described below on /before **10.05.2024**. They will be informed the eligibility before the Pre-bid meeting. Consultants/Firms attending the Pre-bid meeting will get more details about nature and scope of the project, eligibility criteria, terms and conditions and other information relating to the Request For Proposal. Those who want to participate in the bid shall pay Rs. 5000/-by way of DD drawn in the name of Executive Director, Interactive Museum of Cultural history of Kerala towards cost of documents along with Bid documents in separate cover.

General Qualifications for not empanelled with Keralam Museum

1. The details of minimum 3 years experience in the Museum related works.
2. The details of minimum turnover of one crore in last 2 years.
3. The details of completed work with Project cost in last 3 years –Minimum value of project 2 crores.
4. The firm should have a consortium containing the following Technical persons.
 - a. Curator
 - b. Museum designer
 - c. Historian with sufficient experience in said subject
 - d. Implementation team with minimum 5 years experience
 - e. Graphic Designer
 - f. MEP consultant
 - g. Lighting Consultant
 - h. Other experts

Kindly submit the testimonials proving qualifications of the above persons.

1. Technical bid-Evaluation

1. History of the Firm–Turn over, when established, full time staff etc

Total-20 Marks

Up to 3year- 10 marks

Up to 5year- 15 marks

Above 5year-20 marks

2. Technical competence –Details of projects done, similar projects executed

Total-20 Marks

Works executed up to 1 crore/2year- 10 marks

Works executed up to 2 crore/2year- 15 marks

Works executed above 2 crore/2year-20marks

3. Specific experience -Experience in setting up museums or galleries, experience in Kerala

Total-30Marks

1 Work -10 marks

3 Works -20marks

More than 3Works-30 marks

4. Understanding of this project brief – a note on their understanding and approach

Total–30Marks

The marks shall be given one valuation of understanding the project brief.

The Marks secured out of 100 will be converted to out of 40 marks. The Technical bid of ALL the firms should be evaluated against total marks of 100. Empanelled firms should

also submit the full technical bids. The firm/company who secure at least 50 % of score in the evaluation will be treated as qualified for Technical presentation.

2. Technical Presentation

Eligible candidates can participate in the presentation after qualifying Technical bid evaluation.

Medium of Presentation–Offline/Online (Zoom/Google meet)

The technical presentation should be entirely based on the design already prepared.

20 marks-Understanding the brief

20 marks-Respecting the historicity of the building and demonstrative adaptive reuse

20 marks–Understanding the Design flow/strength

20 marks-Economics of design

20 marks-Confidences in executing

Total marks=100 marks

Awarded marks out of 100 will be converted to out of 30 marks. The firm/company who secure at least 50 % marks (15/30) will be treated as qualification for submitting financial bid.

Those who secure 50% marks in technical bid evaluation and technical presentation shall be eligible for the financial bid. The financial bid of those are not eligible shall not be opened for competition.

3. Financial Bid

The Financial bid should be based on the design and estimate already prepared

Estimate Amount =Rs.4721980.44 +GST

- a) The bidder who secure at least 50% of score in the presentation will be treated as technically qualified.

- b) The Financial Bids of the technically qualified bidders will be opened on the prescribed date in the presence of the bidder or their representatives who are authorized by bidder.
- c) The lowest financial bidder (L1) will be awarded 100% score.
- d) Financial Scores for other than L1 bidders will be evaluated using the following formula:
Financial Score of a Bidder = $\left\{ \frac{\text{Financial Bid of L1}}{\text{Financial Bid of the Bidder}} \times 100 \right\} \%$ (Adjusted to two decimal places)
- e) Only fixed price financial bids indicating total price for all the services specified in this bid document will be considered.
- f) The bid price will include all taxes and levies and shall be in Indian Rupees.
- g) Errors & Rectification: Arithmetical errors will be rectified on the following basis: “If there is a discrepancy between the unit price and the total price that is obtained by multiplying the unit price and quantity, the unit price shall prevail and the total price shall be corrected. If there is a discrepancy between words and figures, the amount in words will prevail”.

Combined Evaluation of Technical bid, Presentation & Financial Bids

- a) The technical bid, presentation and financial scores secured by each bidder will be added using weightage of 40 for technical evaluation, 30 for presentation and 30 for financials respectively to compute a Composite Bid Score.
- b) The bidder securing the highest Composite Bid Score will be declared as the Best Value Bidder for award of the Project.
- c) In the event of the bid, if the composite bid scores are ‘tied’, the bidder securing the highest technical score will be declared as the Best Value Bidder for award of the Project.

- d). The successful bidder has to provide a letter of acceptance to Interactive Museum of Cultural History of Kerala (Keralam Museum of History and Heritage, Trivandrum) within seven days of receiving communication about his/her selection from the Department.
- e). The successful bidder shall to sign an agreement with payment schedule at the time of award of the work.
- f). Keralam Museum of History and Heritage reserves all the rights to accept or reject any /all Request For Proposal applications, without assigning any reason. The Department takes no responsibility for the delay, loss or non-receipt of any submission or letter sent by post, within the prescribed time period.

Conditions and Notes

*Completion of work is 4 months

*Cost of RFP document mentioned above should be in the form of separate Demand Draft in favour of Executive Director Interactive Museum of Cultural History of Kerala, Trivandrum

*Excess overestimate/ below estimate rate shall be allowed by the committees constituted for Museum setting works if necessary.

*DPR details will be available in the Keralam Museum at the Office time. You can contact directly for getting details of the project.

*The drawings and estimates are separately attached along with documents

*The presentation should be entirely based on the design already prepared.

* The specification of display lights using in the gallery should be detailed in the design proposal and a competent lighting expert should explain the same.

*The Financial bid should be based on the design, drawing and estimate already prepared

*If the mentioned brand and model equipments is not available in the market, other brands with the equivalent specification can be used at their present market rate

* Lumsum (LS) works enclosed in the estimate can be finalized as per work executed on consulting with Keralam Museum

Application / Request For Proposal in sealed cover with complete details in all respects and super scribed as Selection of Museum Consultancy Firm for Setting up of A. Ramachandran Art Gallery at Sree Narayana Guru Cultural Centre, Kollam shall be submitted at the following address. A soft copy of Presentation shall be sent along with this application. Interested consultants/ consortia of consultants can download the Request for Proposal documents from the website www.museumkeralam.org. The last date for receipt of application (hardcopy) is 15.05.2024. and date of presentation is fixed on 21.05.2024

Sd/-
The Executive Director
Interactive Museum of Cultural History of Kerala
(Keralam Museum of History and Heritage), Park
View Vikas Bhavan P.O,
Trivandrum-695033.

RAMACHANDRAN ART GALLERY,KOLLAM SREENARAYANA GURU CULTURAL CENTER, ASHRAM, KOLLAM ESTIMATE
(Keralam Museum RPF) BOQ

No	Item	Quantity	Units	Rate	Amount
1 CLEANING WORKS					
1	Cleaning mopping and water washing inside building, as direct from site engineer in charge	5	day	1098.57	5492.85
2	Cleaning and waste removal of inside building, dust waste in all floor ie generate various activity in site,	3	day	1679.32	5037.96
3	Cleaning and waste removal of inside building, solid and liquid waste in all floor ie generate various	6	day	1270.47	7622.82
2 RESEARCH AND DEVELOPEMENT					
2	CONTENT IN MALAYALAM AND ENGLISH: Based on DPR and illustration derive text content carve data and information of object, it may embellished by many pictograms, diagrams, and illustrations that may be more interest in museum visitor PANEL DESIGN: Based on the illustration developed display surface with geometry, size, pattern, colour suitable rhythm of museum display ILLUSTRATE:As per the DPR collect object literature from local, reference text, metamorphic character DESIGN DEVELOPEMENT museum & gallery signage, description boards,direction indication	1	JOB	200000.00	200000.00
3 FALSE CEILING AND FLOORING					
1	11.54.1Providing and fixing removable raised/false access flooring with system and its components of approved make for different plenum height with possible height adjustment upto 50 mm, comprising of modular load bearing floor panels supported on G.I. rectangular stinger frame work and G.I. Pedestal etc. all complete, as per the architectural drawings, as specified and as directed by Engineer-in-charge consisting of: a) Providing at required spacing to form modular framework, pedestals made out of GI tube of thickness minimum 2 mm and 25 mm outer diameter, fully welded on the G.I. Base plate of size 100mmx100mmx3mm at the bottom of the pedestal tube, G.I. pedestal head of size 75mmx75mmx3.5mm welded with GI fully threaded stud 16 mm outer diameter with two GI check nuts screwed on the stud for level adjustment upto 50mm, locking and stabilizing the pedestal head in position at the required level. The pedestals shall be fixed to the subfloor (base) through base plate using epoxy based adhesive of approved make or the machine screw with raw plug. and Applying lean concrete 1:2:4 for base of flooring as direction of engineer,	309.177	sqm	3252.20	1005505.44

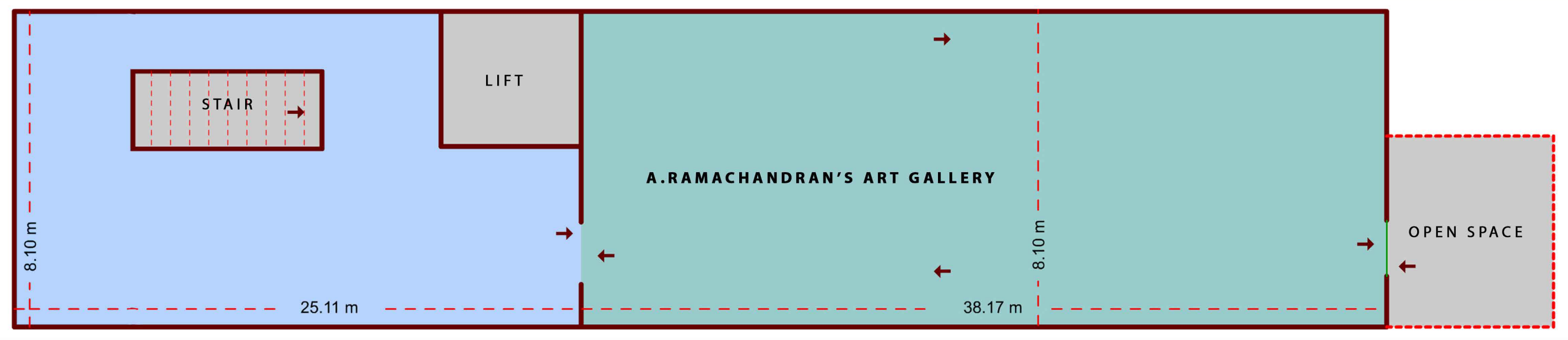
2	<p>Providing and fixing false ceiling at all height including providing and fixing of frame work made of special sections, power pressed from M.S. sheets and galvanized with zinc coating of 120 gms/ sqm (both side inclusive) as per IS : 277 and consisting of angle cleats of size 25 mm wide x 1.6 mm thick with flanges of 27 mm and 37 mm, at 1200 mm centre to centre, one flange fixed to the ceiling with dash fastener 12.5 mm dia x 50 mm long with 6 mm dia bolts, other flange of cleat fixed to the angle hangers of 25x10x0.50 mm of required length with nuts & bolts of required size and other end of angle hanger fixed with intermediate G.I. channels 45x15x0.9 mm running at the spacing of 1200 mm centre to centre, to which the ceiling section 0.5 mm thick bottom wedge of 80 mm with tapered flanges of 26 mm each having lips of 10.5 mm, at 450 mm centre to centre, shall be fixed in a direction perpendicular to G.I. intermediate channel with connecting clips made out of 2.64 mm dia x 230 mm long G.I. wire at every junction, including fixing perimeter channels 0.5 mm thick 27 mm high having flanges of 20 mm and 30 mm long, the perimeter of ceiling fixed to wall/partition with the help of rawl plugs at 450 mm centre, with 25 mm long dry wall screws @ 230 mm interval, including fixing of gypsum board to ceiling section and perimeter channel with the help of dry wall screws of size 3.5x25 mm at 230 mm c/c, including jointing and finishing to a flush finish of tapered and square edges of the board with recommended jointing compound, jointing tapes, finishing with jointing compound in 3 layers covering upto 150 mm on both sides of joint and two coats of primer suitable for board, all as per manufacturer's specification and also including the cost of making openings for light fittings, grills, diffusers, cutouts made with frame of perimeter channels suitably fixed, all complete as per drawings, specification and direction of the Engineer in Charge but excluding the cost of painting with: 12.5 mm thick tapered edge gypsum moisture resistant board</p>	309.177	sqm	2542.60	786113.44
4 LED LIGHTING					
1	Led light fixing technician wages	10.00	JOB	6176.24	61762.40
2	SUPPLY AND FIXING LED FOCUS LIGHT	15.00	Each	3296.25	49443.75
3	SUPPLY AND FIXING LED DOWN LIGHT	40.00	Each	984.75	39390.00
4	SUPPLY AND FIXING LED DOWN LIGHT	25.00	Each	238.36	5959.00
5	SUPPLY AND FIXTING CROMPTON ADAPTER	90.00	Each	75.00	6750.00
6	Providing and fixing led rope light	40.00	Metre	371.39	14855.60
5 WALL PANELLING					

1	Providing and fixing metal frame of approved size by welding to base plate fastned by anchor botts etc. for display panel and decorative frames and similar works including applying painting coat of approved steel primer. Midd steel round bar 12mm and below	26.00	kg	197.46	5133.96
2	Finishing walls with texture finish including, preparing wall surface by using hand grinder/ emery paper which is necessary to remove laitance and provide a suitable surface to receive subsequent finish applying one coat of Acrylic wall primer over the prepared surface applying tow coasts of synthetic readymade plaster over the primed surface applying one coat of colured stain under coat over the putty surface to highlight the finish applying two coasts of coloured strainer coasts over the prepared surface as instructed by Engineer in-charge and protect the surface with one coat of Nano sealer clear matt finish coating and conveyance of material labour and all included	229.501	sqm	1999.64	458919.38
3	Finishing wall Nano coat sealer	229.501	sqm	278.76	63975.70
4	providing and fixing metal frame of approved size by welding to base plate fastened by using suitable bolt/anchor etc. for display panel and decorative frames and similar works, including, supplying, priming coat, finished coat with approved paints round or square bar12mm and below all the works under guidelines /direction of imck	125.00	kg	609.79	76223.75
6 SIGNAGE					
1	supply and providing gallery signage it including materials , labour ,fixing etc. to complete	8.00	Each	8420.88	67367.04
2	supply and providing museum signage it including materials , labour ,fixing etc. to complete	3.00	Each	44137.00	132411.00
7 FURNITURE					
1	French spirit polishing:Two or more coats on new works including a coat of wood filler	39.75	Sqm	421.12	16739.52
2	Polishing on wood work with ready mixed wax polish of approved brand and manufacture:New work	39.75	Sqm	180.96	7193.16
3	PROVIDING and supply cupboard as per design and drawing size 1.5m *0.45m*30mm seating ,leg 2 nos .5m*.5m*30mm in first class teak wood ,its including material and labour to complete including 10 % wastae	2.17	Cum	115874.63	251447.95
8 OBJECT DISPLAY					
1	58.Supply and installation of heat handed aluminum Z bar picture hanging system with all necessary screws and accessories	80.00	Each	987.28	78982.40

2	Title cards in Antique brass finish	51.00	Each	1335.73	68122.23
9 DESIGN & DEVELOP					
1	DESIGN AND DEVELOPE MUSEUM QR CODE AND WEBSITE,intractive ,game of vector tracing mural with expert PHP developer,UI developer,contant creator,WEB architect,Antroid-java technican,QC worker,game developer	2.00	Day	20538.22	41076.44
2	DESIGN DEVELOPEMENT museum & gallery signage, description boards,direction indication boards,with expert -font,texture,pattern ,layout and colour in computerised lab	35.00	sqm	5929.46	207531.10
3	"PANEL DESIGN: Based on the illustration developed display surface with geometry, size, pattern, colour suitable rhythm of museum display " 	35.00	sqm	1683.53	58923.55
13 FINAL TESTING					
1	Artifacts and Image sourcing: AS per the theme generate the symbolized diagrams object effectively, by making or publishing of copyright etc. 	1	JOB	25000	25000.00
6	.LABAELING AND QR CODE WORKS- Based on the available approved illustrations and DPR, with directions of technologist, technocrats, technician- multi-language labels for object with suitable size and scaled to object, label plate embed the QR CODE and it is fascinated, described ,communicate to visitor about object with aspect, it may add audio and video support. Placed and fixed the labels with QR code suitable position nearby object keeping rhythm, viewer visibility, lighting effect It includs all charges of technologist, technocrats, technician, skilled labour and material etc. to complete	1	JOB	400000	400000.00
7	DUMMY DISPLAY & STICKER- Based on the available approved illustrations and DPR, object display space analysis and finalized position of object –based on size and shape of object used cheapest available light weight dummy materials cut same as the object temporally stick on display space marked the object area on display wall and notation posted on surface of display space with least disturbance of surface painting and texture. Mark the position of suitable materials object holding clap fixed on the space with directions of technologist, technocrats, and technicians, ensure conservation aspect of object and museology rules & regulations – after the approval from nodal agency expert wing –remove all the dummy materials except object holding clamp. Including all charges of technologist, technocrats, technician, skilled labour and material etc. to complete.	1	JOB	375000	375000.00
14 CONSERVATION OF EXIBIT		1	JOB	200000	200000.00
1	TOTAL				4721980.44

I agree to execute the work at Estimate rate / ____% below / ____% above

PROPOSED FLOOR PLAN OF THE GALLERY



FIRST FLOOR PLAN

FIRST FLOOR PLAN OF PRESENT BUILDING

